



Info packet

Dear participant,

next pages should help you with the orientation in Prague :) you will find there people from OC, places where we will go during CoMeet and how to get back to the accommodation from each part of the evening program.

Don't hesitate to contact us in case of troubles or unsolved problems.

Safe travel and looking forward to meeting you in Prague.

Your CoMeet OC

About OC



Our team consists of people from organization ESN VSE Prague. We have 12 people in team, new members as well as "old" members with lot of experience from similar meetings or events. Head of CoMeet OC is Pavlina Sladkova.

Pavlí Sládková



Lucka Kalinová



Lenka Račanská



Bob Dvořák



Tomáš Kořínek



Maruška Krušinová



Katka Kučerová



Evča Kuchtová



Honza Kyzivát



Tomáš Legát



Mirek Šulc



Janča Vránová





Prague transport

Arriving in Prague

The airport (Prague - Ruzyně, PRG) is located about 15 km northwest of the city center. The airport was recently reconstructed and modernised and offers all the usual services. To get to the center using public transport, take city bus 119 (stop 30m straight ahead of the arrivals exit). The bus takes you to "Vítězné náměstí" (final stop) - Metro station "Dejvická", line A. The journey takes about 25 minutes. Another possibility is to take one of the taxis waiting in front of the airport. Please note that you should negotiate a price with the driver before getting into the airport taxi, since some of the airport taxis do not have meters.

There are several railway stations in Prague, two of which serve international and long-distance trains. The Main Station ("Hlavní nádraží") is located close to the city center. Most of the international and long-distance trains depart from or arrive to the Main Station. The Holesovice station ("nádraží Holešovice") is located north of the city center. EuroCity and InterCity trains passing from the North to East stop at this newly built station. Both of these stations have connections to Metro - line C (stations "Hlavní nádraží" and "Nádraží Holešovice").

The main bus terminal is located at Florenc - close to the city center. International and long-distance buses usually depart from or arrive to this central bus terminal. It has direct access to the Metro - lines B and C, station Florenc.

Public Transportation

The city area is densely covered by the public transport network. The system consists of three lines of Metro (the underground), trams and city buses. Trams operate more in central areas of the city, and city buses usually connect the housing quarters with nearest Metro stations.

At night there is a night public transportation that usually runs every 30 minutes and is provided by night trams and busses.

Taxi

If you want to take a taxi on the street - ask for the price first, so they don't try to rip you off!

Another possibility is also to call a taxi in advance. (There are various taxi providers, some less or more expensive)

When you are riding, try to pay attention to the driver if he is not switching your regular fare to "turbo fare".

Unfortunately, taxi drivers tend to charge more for services, when they know you are foreigner or when you are not careful enough.

Money and prices



The currency in the Czech Republic is the Czech Crown (Koruna, code CZK). One Crown equals 100 Hellers (Halir).

There are 5000, 2000, 1000, 500, 200, 100, 50 Crown notes, and 50, 20, 10, 5, 2, 1 Crown, and 50 Heller coins in circulation.

Foreign currencies can be exchanged in banks or exchange offices. There is a number of tourist exchange offices throughout the city center, some of which are open Mon-Sun till late evening. Foreigners are advised not to change money on the street. The local currency has free convertibility and there is no need for the black market. Any such activity should therefore be viewed with a high degree of suspicion and the risks involved are enormous.

A wide variety of foreign currencies are accepted in exchange offices, including all West European currencies. The most frequently used foreign currency is Euro (EUR).

Major travelers cheques are accepted by banks and exchange offices.

Generally said, there is quite dense network of bankomats (ATM machines) in the Czech Republic, especially in Prague. Almost all these terminals accept both international VISA and EuroCard-MasterCard, also Cirrus, EDC-Maestro and American Express cards are accepted. It's a good idea to check the labels on every particular terminal before using it. Also beware of the thieves when you are manipulating with your credit card.

EuroCard-MasterCard, VISA and American Express cards are accepted in major shops - especially in tourist areas of the city.

Prices

Beer (0.5l) 20 – 30 CZK

Bread 15 – 25 CZK

Water (0,5l) 10 CZK

Meal (menza) 36 CZK

Meal (restaurant) 100 – xxx CZK

Personal safety



Chances are good that you will have a very pleasant, safe stay in Prague. Like any big city, though, Prague has its share of crime, particularly pick-pocketing and crimes of opportunity such as theft. For your personal safety and the security of your belongings, it is wise to take note of the following advice.

In the city and on public transportation:

Pick-pocketers make an excellent living in Prague. To avoid being a victim, always be alert to your surroundings when you are in crowds or riding crowded public transportation, especially trams and the metro, and guard your money and belongings accordingly. Pickpocketers often work in pairs or teams and may prey upon people who are distracted by conversation or lost in thought. Make sure that your money and essential documents such as your passport are kept in a safe place where only YOU can access them - never keep your wallet in your back pocket, for example.

In the dormitory:

Although the dormitory will be your "home" for the duration of your stay in Prague, it is a good idea to use the same precautions there as you would in any apartment building in any city. These include not leaving your door open or unlocked when you go down the hall, even for a few minutes, not leaving money, documents or valuables such as cameras or laptop computers in plain view, and immediately reporting anyone who behaves in a suspicious manner.

Useful telephone numbers

Police: 158

Emergency ambulance: 155

International telephone exchange: 0135

MCI International: 00 420 00 112

Official schedule



WEDNESDAY 8/9/2010

Arrivals + optional guide tour in Prague (meeting 4pm – dorms) :)

20:00-22:00 Dinner in Sklep
22:30-? The pub "The World of Beer"

THURSDAY 9/9/2010

7:30-9:00 Breakfast + Transfer
9:00-12:30 CoMeeting
12:30-14:00 Lunch
14:00-18:00 CoMeeting
18:00-20:00 Leaving to dorms and free time
21:00-23:00 Official welcome in Amfora
23:00-? The club "Heaven"

FRIDAY 10/9/2010

7:30-9:00 Breakfast + Transfer
9:00-12:30 CoMeeting
12:30-14:00 Lunch
14:00-16:00 CoMeeting
16:00-18:00 Workshops
18:00-20:00 Leaving to dorms and free time
21:00-23:00 Dinner in Czech Inn Cafe
23:00-? the pub "The Pub "

SATURDAY 11/9/2010

7:30-9:00 Breakfast + Transfer
9:00-12:30 CoMeeting
12:30-14:00 Lunch
14:00-17:00 CoMeeting
17:00-19:00 Leaving to dorms and free time
20:00-22:00 Dinner in Kilfenora
22:00-? The club "Futurum"

SUNDAY 12/9/2010

7:30 Waking up
8:00-10:00 Leaving the dorms

Departures :(



Evening program

WEDNESDAY 8/9/2010

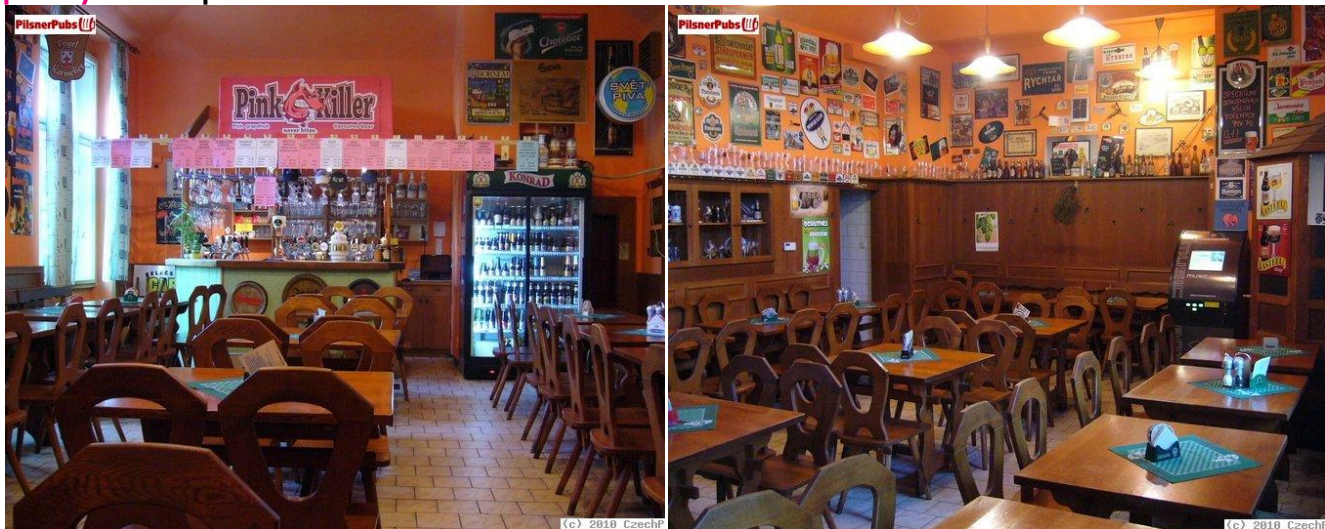
restaurant: **SKLEP**



transport from Sklep to accommodation:

From	To	How	When	Interval	
Husinecká	Strážní	Tram no. 9	22:30	10 mins	

party: the pub **"WORLD OF BEER"**



transport from "World of Beer" to accommodation:

From	To	How	When	Interval	
Lipanská	Strážní	Tram no. 9	23:01	10 mins	Last one at 00:31
Lipanská	Strážní	Tram no. 58	0:55	30 mins	

Note: facing the pub go to the right and straight till the tram stop

Evening program



THURSDAY 9/9/2010

restaurant: **AMFORA**



transport from Amfora to accommodation:

From	To	How	When	Interval	
Křížkova	Palmovka	Metro B, direction Černý Most	22:36	10 mins	CHANGE
Palmovka	Strážní	Tram no. 1	22:47		
Note: When you take the tram with terminal stop different from „Spojovací“, you have to change the tram at „Ohrada“. There you can take any tram going to „Spojovací“ (tram no. 1, 9 or 16)					
Note: In „Palmovka“ metro station, take the exit to „Karlín“ or „Žižkov“ (Žižkov is more important)					
From	To	How	When	Interval	
Křížkova	Jindřišská	Tram no. 24	22:25	20 mins	CHANGE
Jindřišská	Strážní	Tram no. 9	22:37		

party: the club **“THE HEAVEN”**



transport from "The Heaven" to accommodation:

From	To	How	When	Interval	
Náměstí Republiky	Nákladové nádraží Žižkov	Tram no. 26	23:01	20 mins	CHANGE*
Nákladové nádraží Žižkov	Strážní	Tram no. 9 or 16			
* you have to go to the other one stop „Nákladové nádraží Žižkov“ (yes, we have two☺). When you get off your tram, follow it and on the crossroad turn left.					
From	To	How	When	Interval	
Náměstí Republiky	Jindřišská	Tram no. 51	00:33	30 mins	CHANGE
Jindřišská	Strážní	Tram no. 58	00:50	30 mins	

Evening program



FRIDAY 10/9/2010

restaurant: CZECH INN CAFE



transport from Czech Inn Cafe to accommodation:

From	To	How	When	Interval	
Náměstí Míru	Strážní	Tram no. 16	22:10	20 mins	

party: the pub "THE PUB"



transport from "The Pub" to accommodation:

From	To	How	When	Interval	
I.P.Pavlova	Strážní	Tram no. 16	23:08	20 mins	Last one at 01:08
From	To	How	When	Interval	
I.P.Pavlova	Lazarská	Tram no. 51	01:36	30 mins	
Lazarská	Strážní	Tram no. 58	01:46	30 mins	

Evening program



SATURDAY 11/9/2010

restaurant: **KILFENORA**



transport from Kilfenora to accommodation:

From	To	How	When	Interval	
Vinohradská tržnice	Želivského	Tram no. 11	22:09	20 mins	CHANGE
Želivského	Strážní	Tram no. 16	22:20	20 mins	

party: the club **"FUTURUM"**



transport from "Futurum" to accommodation:

From	To	How	When	Interval	
Zborovská	Strážní	Tram no. 16	23:00	20 mins	Last one at 01:00
From	To	How	When	Interval	
Palackého náměstí*	Lazarská	Tram no. 53	01:37	30 mins	CHANGE
Lazarská	Strážní	Tram no. 58	01:46	30 mins	

* Facing the club go to the left as long as you see a bridge on the left side. Cross the bridge. Now you are at Palackého náměstí.